

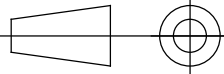


La proprietà del presente disegno e' di
DAIKIN APPLIED EUROPE S.p.A.
La riproduzione, anche se parziale, e la diffusione
senza autorizzazione sono vietate a termini di legge.
This document is reserved property of
DAIKIN APPLIED EUROPE S.p.A.
Reproduction or use for any purpose
without authorization is strictly forbidden by law.

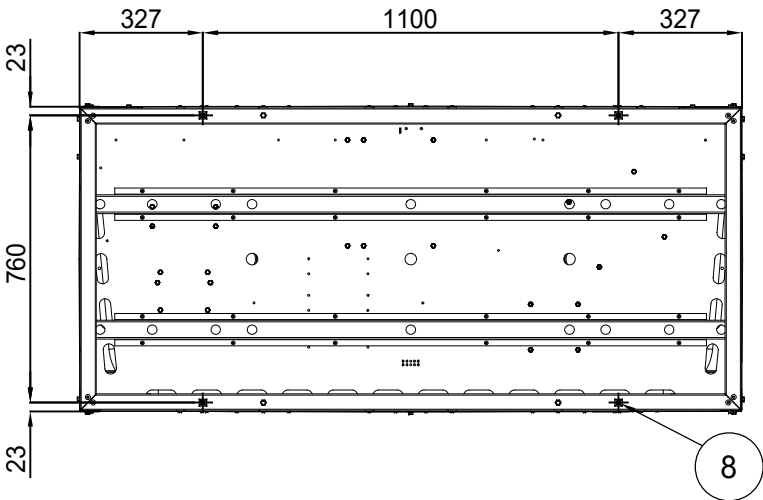
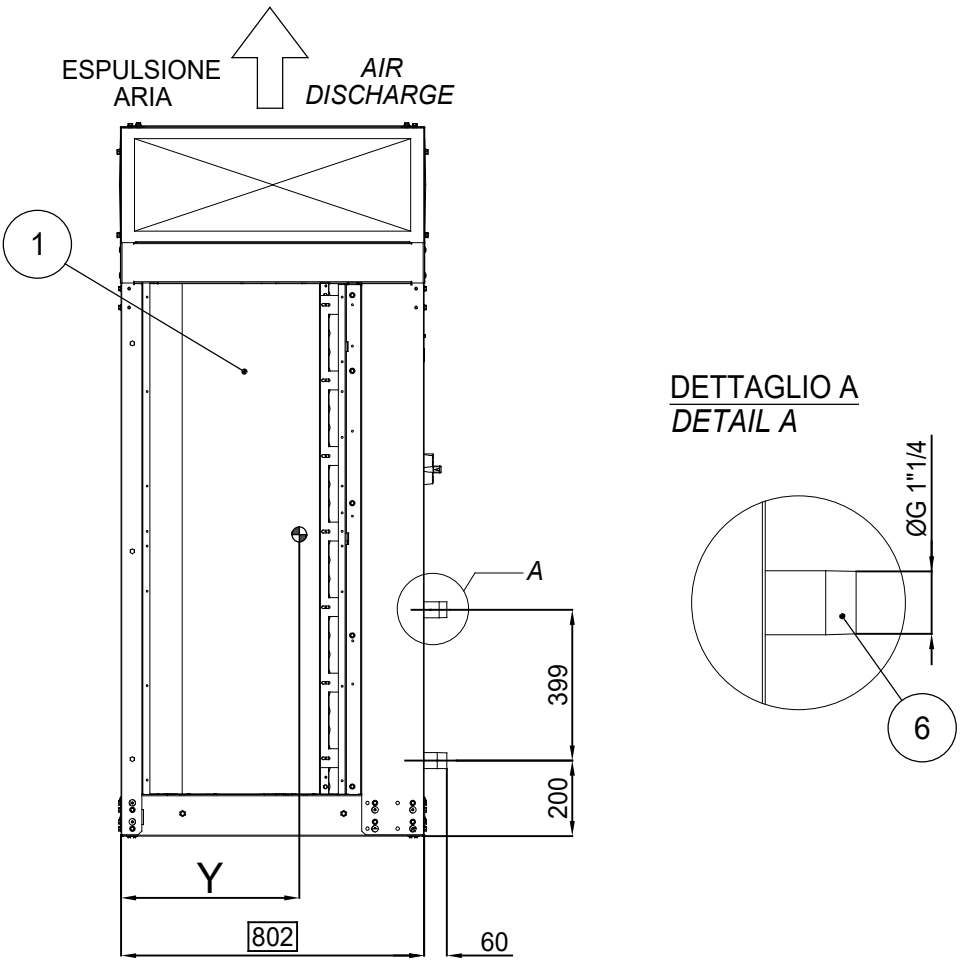
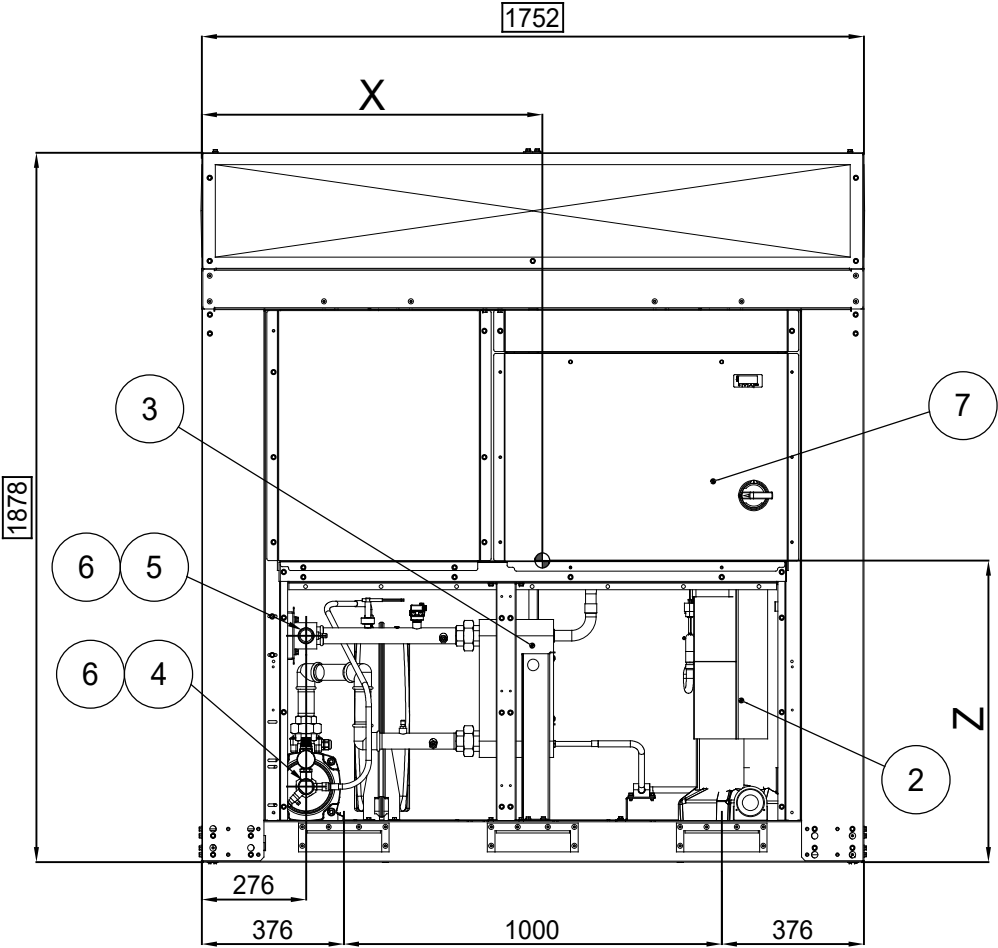
Denominazione / Identification
EWAT032÷040CZP÷H-A1

Dis./Dwg.
A.Lorenzi
Ver./Check
M.Caradonna
Appr./Passed
A.Consorti

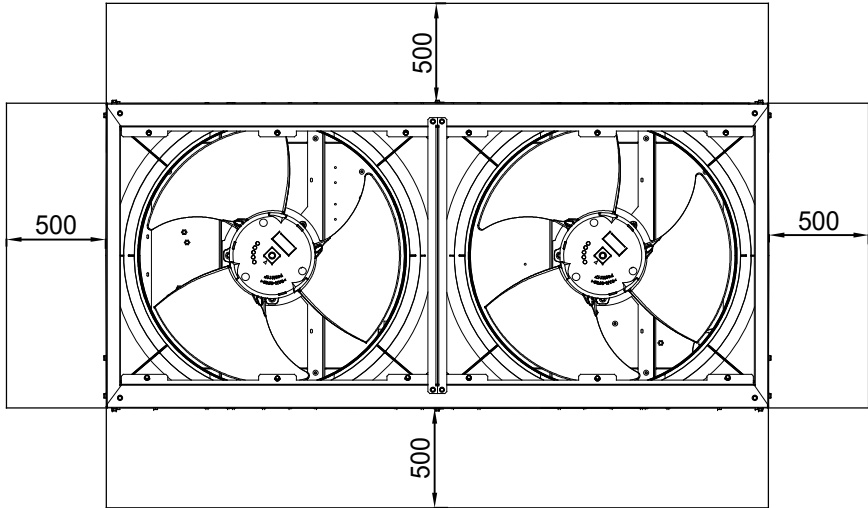
Codice /Part. No.
EWAT032÷040CZP÷H-A1
Data/Date
16/02/2021
Foglio-Sheet
A3
Scala-Scale
1:20



Tolleranza generale
General Tolerance ±20mm



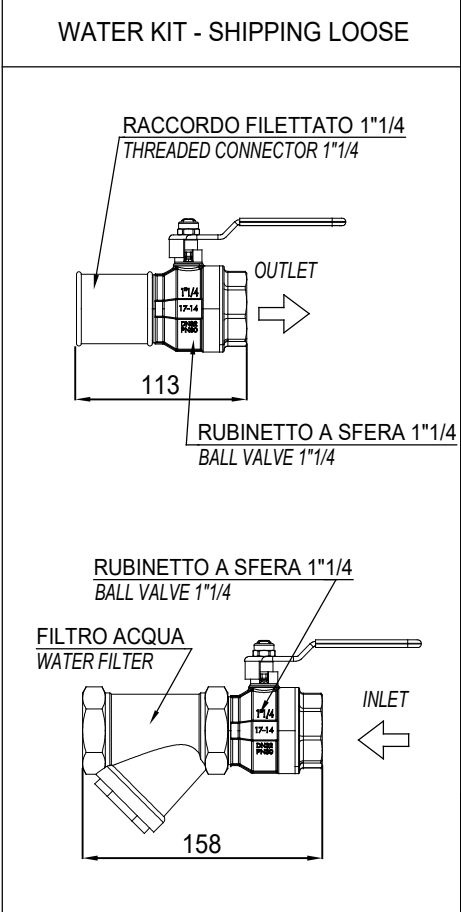
DISPOSIZIONE FORI MONTAGGIO (VISTA DAL BASSO)
MOUNTING HOLES LOCATION (BOTTOM VIEW)



SPAZIO MINIMO NECESSARIO MANUTENZIONE
MINIMUM REQUIRED MAINTENANCE

LEGENDA - LEGEND

1. BATTERIA CONDENSANTE
CONDENSER COIL
2. COMPRESSORE
COMPRESSOR
3. EVAPORATORE
EVAPORATOR
4. ENTRATA ACQUA EVAPORATORE/POMPA
EVAPORATOR/PUMP WATER INLET
5. USCITA ACQUA EVAPORATORE
EVAPORATOR WATER OUTLET
6. CONNESSIONI EVAPORATORE/POMPE 1" 1/4 GAS
EVAPORATOR/PUMPS CONNECTIONS 1" 1/4 GAS
7. PANNELLO DI COMANDO E CONTROLLO
OPERATING AND CONTROL PANEL
8. FORI Ø12 mm PER MONTAGGIO UNITA'
UNIT MOUNTING HOLES Ø12 mm



VERSIONE VERSION	TIPO CONDENSATORE CONDENSER TYPE	PESO / WEIGHT KG		BARICENTRO CENTRE OF GRAVITY		
		SPEDIZIONE SHIPPING	FUNZIONAMENTO OPERATING	X	Y	Z
EWAT032CZP-A1 EWAT032CZH-A1	ALLUMINIO / ALUMINUM ACRYLIC COATED	383	386	930	461	799
EWAT040CZP-A1 EWAT040CZH-A1	ALLUMINIO / ALUMINUM ACRYLIC COATED	382	385	935	462	799